

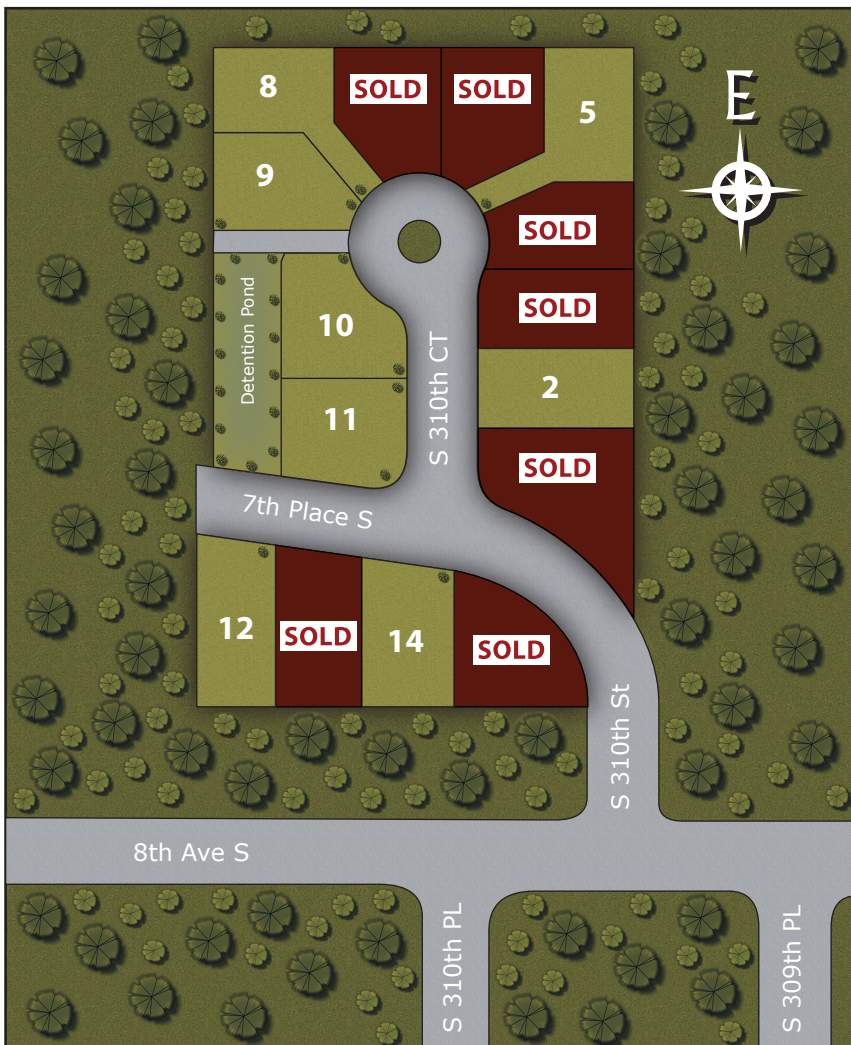
**PRESALE LOTS
AVAILABLE**

Ming Court

**NEW
INTEGRITY
COLLECTION**

LOT	MODEL	BED / BATH / GARAGE	SQ FT	COMPLETION	PRICE
2	Randolph	4 bed • 2.5 bath • 2 car	2445	Complete	\$309,950
5	Jaxon	4 bed • 2.5 bath • 2 car	2268	6 Months	\$294,950
8	Ellington	3 bed • 2.5 bath • 2 car	1764	4 Months	\$274,950
9	Randolph	4 bed • 2.5 bath • 2 car	2445	6 Months	\$299,950
10	Fairfield	3 bed • 2.5 bath • 3 car	1659	4 Months	\$272,950
12	Baxter	3 bed • 2.5 bath • 3 car	2325	6 Months	\$304,950
14	Austin	4 bed • 2.5 bath • 2 car	2377	6 Months	\$299,450

Norris Homes reserves the right to make changes to specifications and features without notice. All marketing materials are examples, and not deemed a warranty of any kind. Square footages are approximate. Prices and availability subject to change without notice. Specifications may vary amongst home collections and communities. Last Update 6/24/2010.



PRE-SELLING NOW!!!

Select Your Lot
Select Your House Plan
Select Your Design Elements Now!

Corinne Lombardo

(253) 661-5264

cnorrishomes@windermere.com

Community Features:

- Within walking distance of shopping.
- Close to Steele Lake.
- Nearby Federal Way transit center.
- Minutes away from Dash Point State Park.

Driving Directions To:

8th Ave S & S 309th Ct
Federal Way, WA 98023

Southbound I-5, take Exit 143.

Turn right on S320th St.
Turn right on Pacific Hwy S.
Turn left on S312th St.
Turn right on 8th Ave S.
Turn left on S 310th St.

Windermere

**Cornerstone
Home Lending**
Cornerstone Home Lending Inc.

NORRIS
H O M E S 

www.NorrisHomesInc.com